



October 12, 2017

TO: The Board of Trustees of the University of Oregon

FR: Angela Wilhelms, University Secretary

RE: Notice of Board Meeting

The Board of Trustees of the University of Oregon will hold a meeting on the date and at the location set forth below. The topic of this meeting will be phase one of the Knight Campus capital construction project (review and request for approval).

The meeting will occur at 11:00 a.m. PT on Wednesday, October 18, 2017.

The meeting will be a telephonic meeting of the board. Members of the public interested in the proceedings may observe them in Room 340/Board Room of the Erb Memorial Union (EMU).

The EMU is located at 1395 University Street in Eugene, Oregon. If special accommodations are required, please contact Jennifer LaBelle at (541) 346-3013 at least 48 hours in advance.

BOARD OF TRUSTEES

6227 University of Oregon, Eugene OR 97403-1266 T (541) 346-3166 trustees.uoregon.edu

An equal-opportunity, affirmative-action institution committed to cultural diversity and compliance with the Americans with Disabilities Act

**Board of Trustees
Public Meeting Agenda | October 18, 2017
Erb Memorial Union, Room 340**

11:00 a.m. Convene Public Meeting

- Call to order, roll call, verification of quorum

1. Knight Campus Capital Project Phase 1 (Action)

Patrick Phillips, Acting Director of the Knight Campus for Accelerating Scientific Impact

Meeting Adjourned

Introduction

Board of Trustees approval is sought for expenditure of funds to support the first phase of building out the physical infrastructure for the Knight Campus for Accelerating Scientific Impact (“Knight Campus”). The project team was charged with developing an iconic design as part of the university’s long-term strategy for Franklin Boulevard. The project will house a cutting-edge research facility inclusive of shared core facilities, lab space for faculty, and engaging public spaces. An enclosed bridge from this facility to the Lewis Integrative Science Building and a parking garage to support Knight Campus faculty and personnel are included in the project package.

Project Overview

The Knight Campus is a \$1 billion initiative to support high impact science, experiential scientific training, and an innovation center. The UO launched the initiative with the generous support of Penny and Phil Knight’s cornerstone gift of \$500 million. Phase one of the capital project includes one building with two towers that is connected to the campus north of Franklin by an enclosed pedestrian bridge to the Lewis Integrative Science Building.

The first floor is a welcoming location that includes classrooms, meeting rooms, student spaces, and a 150-seat seminar room designed for sophisticated multimedia presentations and equipped with distance-engagement technology.

The second floor is the heart of the building, housing the innovation center—including rentable laboratory spaces and a business center, training labs and the headquarters of the graduate experiential learning programs, administrative staff offices, a café, and an all-season outdoor terrace overlooking the millrace.

The third and fourth floors are designed to house faculty-led research teams with room for at least thirty principal investigators. These laboratory floors are built with a unique mezzanine structure that keeps faculty offices close to laboratories and computational spaces for ease of communication and collaboration. Ample research support space is provided for each of the eight “neighborhoods” created by the design. A glass connector and multiple staircases allow for easy workflow between the towers and floors.

The basement will house four spaces dedicated to research core facilities and also includes quiet working areas and some social spaces. The research core facilities anticipated for this space will be administered by the vice president for research and innovation and include: a clean room (a controlled environment in which products/prototypes are manufactured), a fabrication room (space and tools to build and fabricate items that are bigger than on the molecular scale and no bigger than an office copier – e.g. robotics, screening technologies, assistive devices, etc.), a microscope facility, and an approximately 2000 square foot space held to meet the needs of scientists yet to be hired.

Outside of the building, the project includes enhancements to the Millrace and Franklin Boulevard such as landscape restoration and renewal, bridge construction, path work, and lighting.

A related parking structure is included to accommodate parking needs and regulations.

Cost and Funding

This project is funded through a combination of the Knights' gift and revenue bond proceeds authorized by the State Legislature.

The anticipated budget for phase one is \$225,000,000. \$50 million of this is from the abovementioned state revenue bonds, which we anticipate receiving in late spring 2019.

Timeline

Conceptual and schematic design phases are complete and the project is well in to design development. Demolition of existing structures will begin on or about February 1, 2018, with site preparation following in the spring. Construction will begin in summer 2018. Occupancy is expected to begin in January 2020.

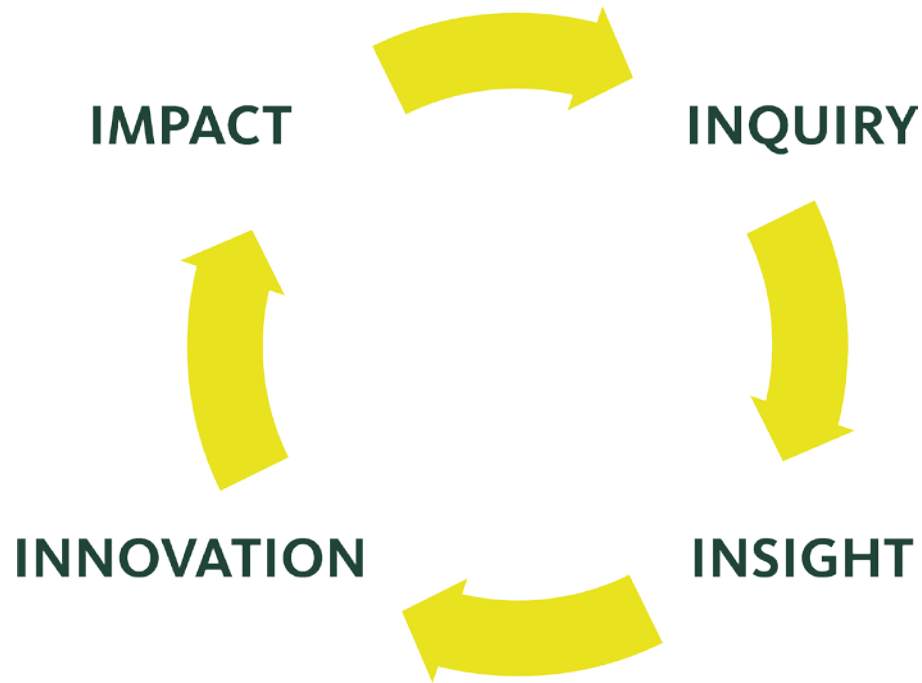
Broad Impacts

Careful coordination with campus partners and external partners (i.e. EWEB, Comcast) has been executed since the initial stages of this project. The project is expected to provide enhancements to the Franklin corridor and an enclosed, safe passage across Franklin as a benefit to the community. The project team has conducted and will continue to pursue studies and tests to determine impacts and safety. These include but are not limited to shadow studies, wind and air movement studies, and soil testing.

Overall, this building will help fundamentally reshape the look and feel of campus from Franklin Boulevard, provide millions of dollars in local and state economic impacts, and house world-class research to advance the Knight Campus mission of Science Advancing Society.



Phil and Penny Knight Campus for Accelerating Scientific Impact



Board of Trustees – October 18, 2017

Timeline

The Phil and Penny Knight Campus for Accelerating Scientific Impact was announced on October 18, 2016...

...exactly one year ago.

Charge to Building User Group

Conceive, design and build a world-class research building on an accelerated timeline

Capital Project

Goals:

- Hire world class architects and construction firms
- Conceive and design an iconic building for the campus, the university and the city that is of the highest quality for research and innovation
- Pursue partnership with the state to secure public financing for a portion of the project
- Develop sound financial models for project
- Accelerated facilities planning and building

Status of Capital Project

What have we accomplished to date?

- Over 20 visits to peer research institutions to tour buildings and infrastructure
- Hired and contracted with nationally recognized architects and construction firms
- Completed conceptual report for the physical campus

Status of Capital Project

What have we accomplished to date?

- Acquired all necessary property to initiate the project
- Partnered with state for bonding support of \$50M in FY19 and opportunity for additional funding
- In last stage of schematic design phase: expect to reveal an outstanding building design in October 2017
- On track to meet the 2020 occupancy milestone

Project Scope

- Two phases of construction based on availability of resources from gift and state investment
- Previous Board approval for property acquisition and architectural planning
- Coming approval will be for Phase I construction
 - 160,000 sq ft research and innovation structure
 - Estimated \$225 million total project cost

Capital Project

What are the key milestones moving forward?

- Design & Development – begins September 2017
- Construction – begins spring 2018
- Project Completion – projected winter 2020
- Occupancy – winter through summer 2020

Board of Trustees of the University of Oregon

Resolution: Knight Campus Capital Project (Phase 1) Authorization

Whereas, the Knight Campus for Accelerating Scientific Impact (“Knight Campus”) was established by the University of Oregon (“University”) as a bold, new initiative to shorten the timeline between scientific discovery and society impact through co-located world-class research, training, and entrepreneurship;

Whereas, the Knight Campus will be housed in state of the art facilities designed to foster collaboration among faculty, research teams, students, and industry partners;

Whereas, the University is ready to commence with construction of Phase 1 of the Knight Campus, which includes an approximately 160,000 square foot building on the north side of Franklin Boulevard and a sky bridge connecting this new facility with the Lokey Science Complex;

Whereas, University of Oregon policies require approval by the Board of Trustees for a capital project budget anticipated to exceed \$5,000,000 and the anticipated cost of this project is \$225,000,000; and,

Whereas, this project shall be funded with proceeds from philanthropic support for the Knight Campus and proceeds from general obligation bonds authorized by the State Legislature for purposes of this project;

NOW THEREFORE, the Board of Trustees of the University of Oregon hereby authorizes and ratifies:

- 1) A budget of \$225,000,000 for Phase 1 of the Knight Campus capital project;
- 2) The President and his designee(s) to take all actions necessary and proper to execute Phase 1 of the Knight Campus capital project; and,
- 3) All actions taken by the University up to and through passage of this resolution in advancement of the Knight Campus capital project.

Moved: _____

Seconded: _____

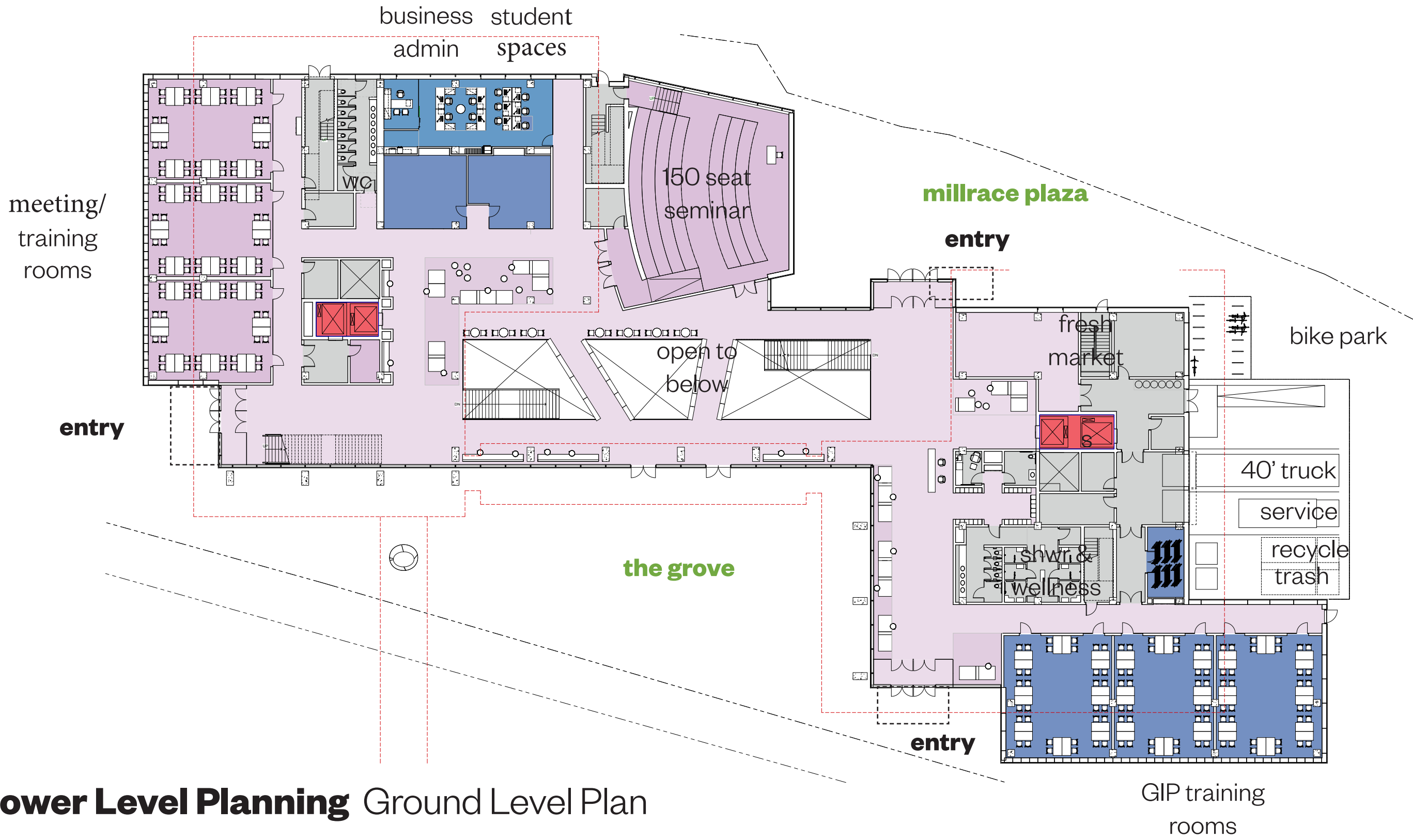
Trustee	Vote
Ballmer	
Bragdon	
Chapa	
Colas	
Curry	
Ford	
Gonyea	

Trustee	Vote
Kari	
Lillis	
McIntyre	
Murray	
Paustian	
Ralph	
Wilcox	

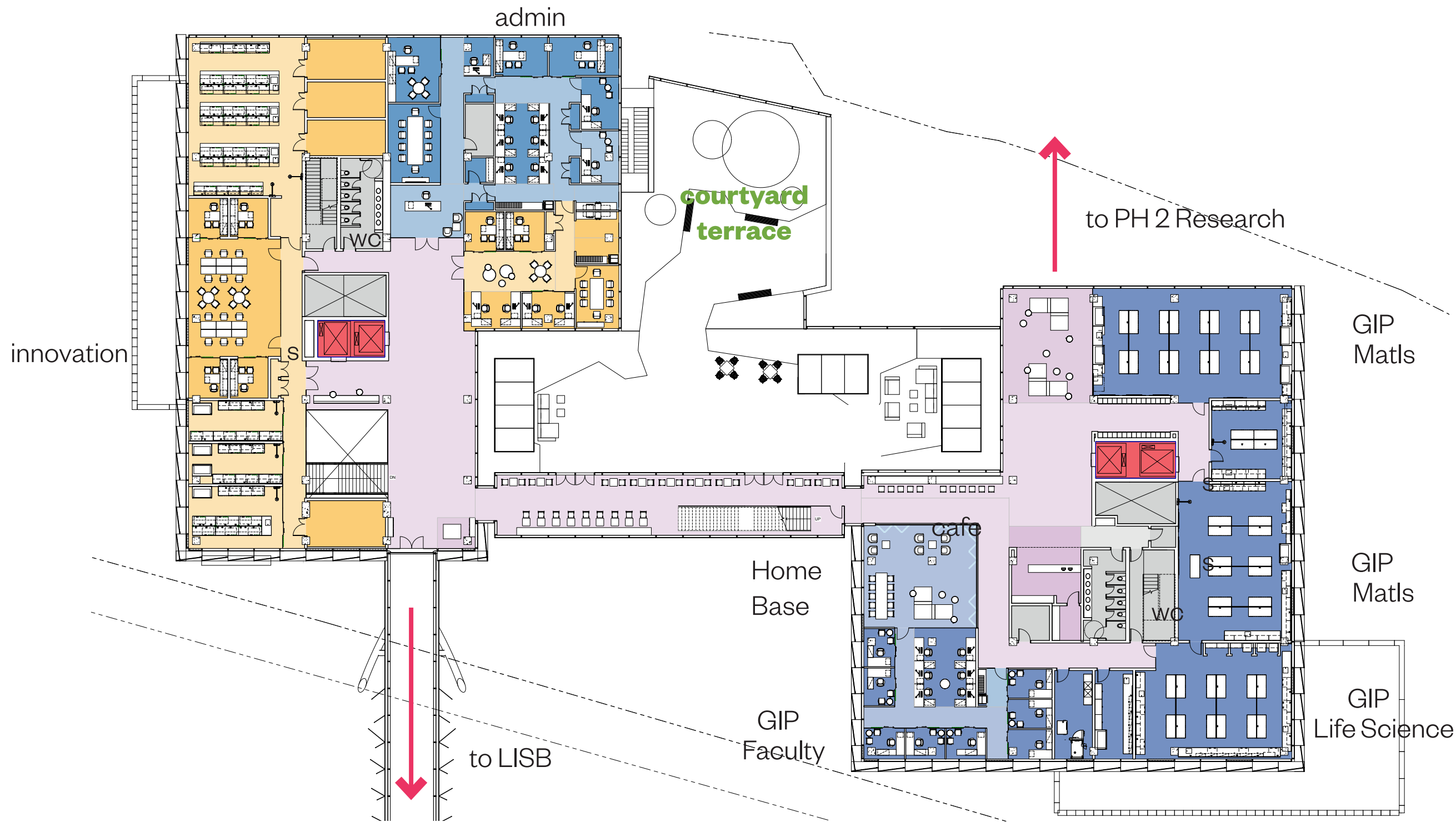
Dated: _____

Initials: _____

SUPPLEMENTAL MATERIALS

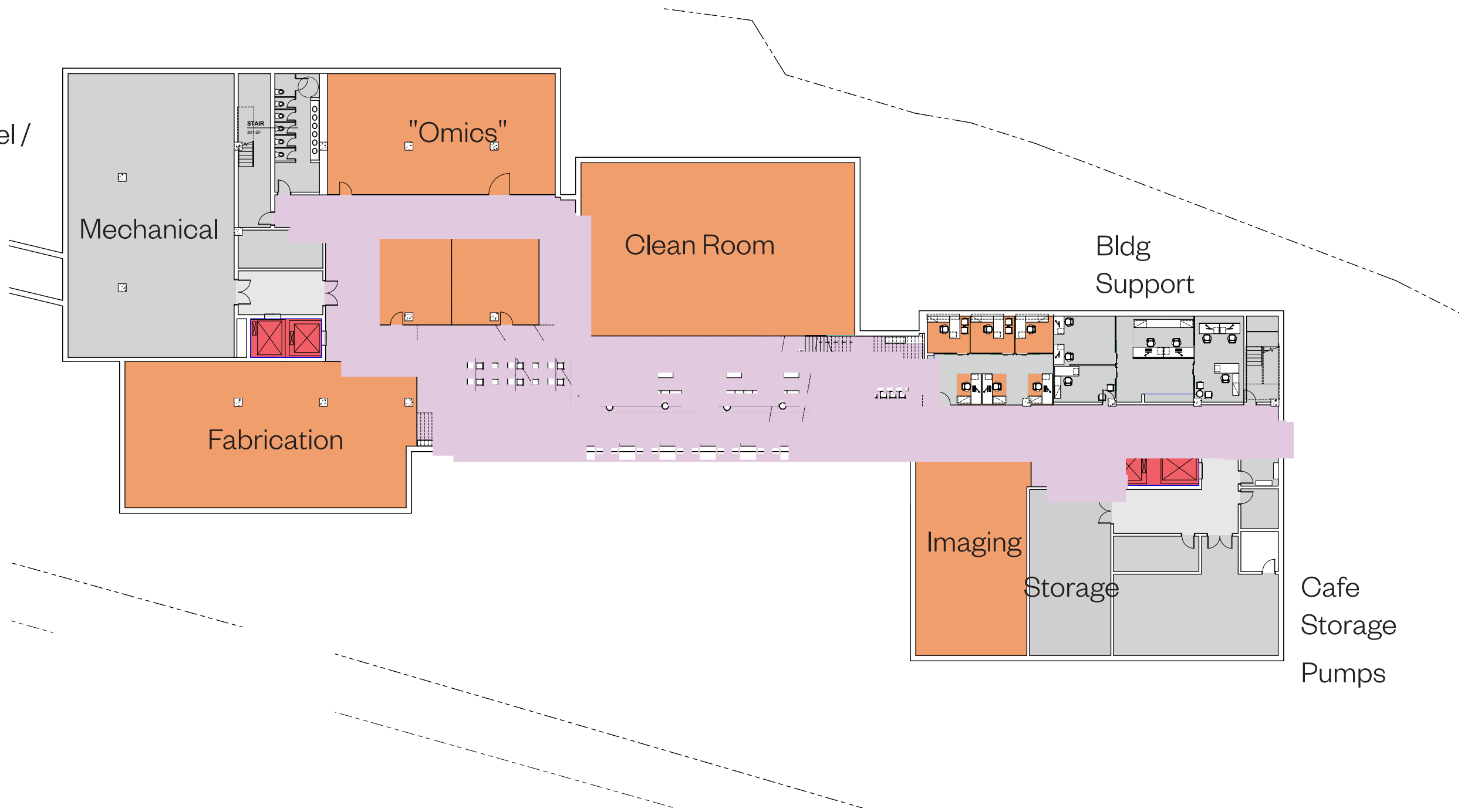


Lower Level Planning Ground Level Plan

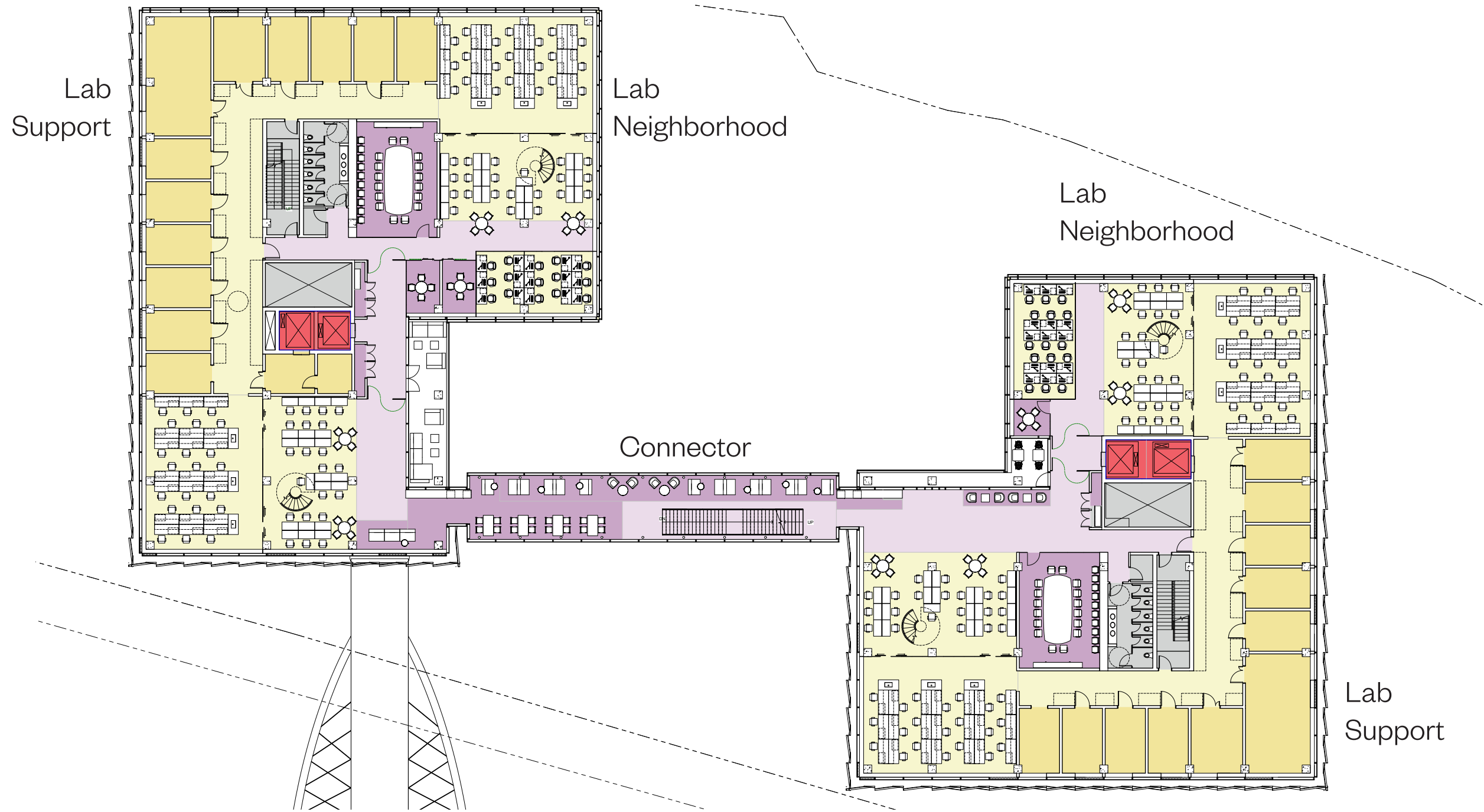


Lower Level Planning Second Level Plan

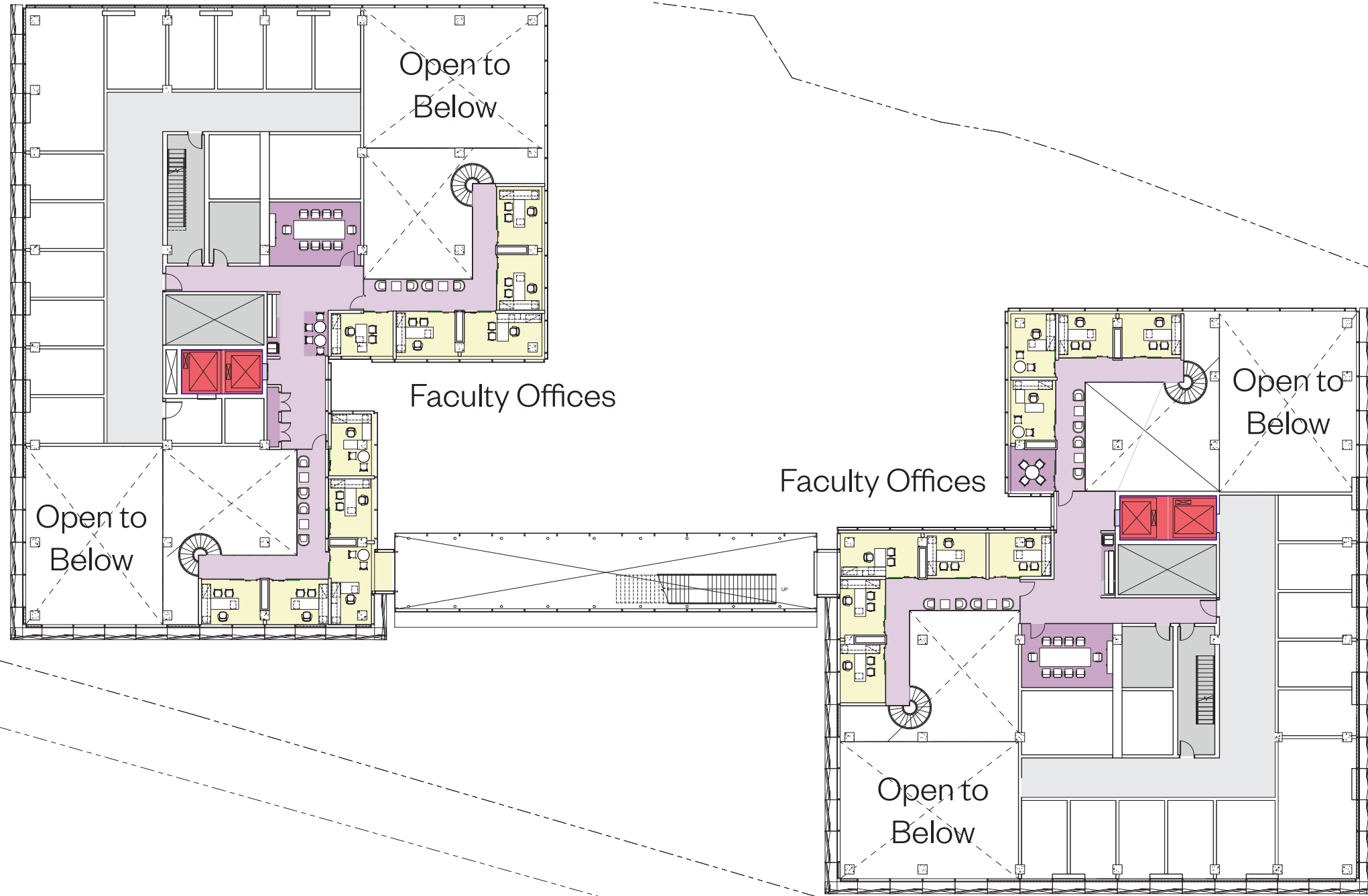
to Utility Tunnel /



Lower Level Planning Basement Level Plan



Research Levels Combined Lab Plan



Research Levels Mezzanine Plan