



## **1. Association of American Universities**

The Association of American Universities (AAU), founded in 1900, is a collection of 62 elite public and private high-intensity research Universities. Elected to the AAU in 1969, the University of Oregon is the only member of the association from Oregon and is the smallest of the 36 public American universities in the association. As an AAU member, the University of Oregon continually measures its goals and achievements against those of our public AAU peers.

## **2. Benchmarking**

Attached to this is a brief benchmarking report comparing specific important UO metrics to the average of those same metrics at our AAU public peers. Because UO is so small relative to those peers, most metrics are also normalized by an appropriate measure of our size, such as student or faculty population.

# Benchmarking the University of Oregon

---



## Table of Contents

---

<b>Introduction</b> .....	1
<b>The University of Oregon within the Association of American Universities</b> .....	3
<i>Enrollment and Faculty Overview</i> .....	5
<i>Student Race and Ethnicity</i> .....	6
<i>Student Access and Progress</i> .....	7
<i>Student Graduation Rates and Debt at Graduation</i> .....	8
<i>Faculty Diversity</i> .....	9
<i>Bachelor’s Degrees Awarded</i> .....	10
<i>Graduate Degrees Awarded</i> .....	11
<i>Federally Financed Research and Development</i> .....	12
<i>Fundraising</i> .....	13
<i>Total Expenditures</i> .....	14
<b>Appendix</b> .....	15
<i>Appendix A: Sources</i> .....	17

“Never underestimate the difficulty of changing false beliefs with facts.”  
-- Henry Rosovsky

## **Introduction**

The University of Oregon functions in a highly competitive domain. We compete for student, faculty, research and administrative talent as well as state, federal, private and corporate funding. We compete every day for the intellectual and financial resources that allow us to achieve our basic mission: advancement of knowledge.

This report, *Benchmarking the University of Oregon*, is a compendium of many of the metrics that describe the University and measure our success inside and outside of the state of Oregon. These metrics help us to address the question: “How well do we compete for resources and how well do we achieve our mission?”

Because this is a benchmarking exercise, the report displays only those metrics that can be reliably compared to the same metrics at other institutions. The 34 public university members of the elite Association of American Universities, which includes the University of Oregon, serve as the primary set of peers on which to focus the comparisons in the report. Within that set, eight universities comprise UO’s official peer group established by the Oregon State Board of Higher Education and are so noted in the data.

The UO is continually ranked and measured by external agencies. Rankings are not a part of the institution’s mission but they can have a fundamental impact on the University’s ability to compete for the resources required to fulfill that mission. It is essential to have a firm, fact-based notion of where these rankings place us within the higher education landscape.

We chose many of the metrics because they are specific to our mission and also inform various external rankings. We included additional metrics because they are equally important measures of who we are and how well we are succeeding. The metrics in this report are not intended to be comprehensive, but they provide a mission-focused and manageable set.

*Benchmarking the University of Oregon* is presented as one of the steps toward the creation of a viable, comprehensive strategic plan for the future of the University of Oregon.

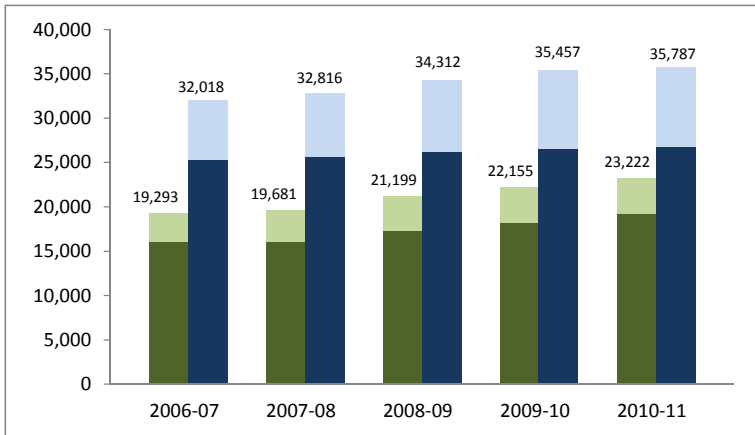
# The University of Oregon within the Association of American Universities

---

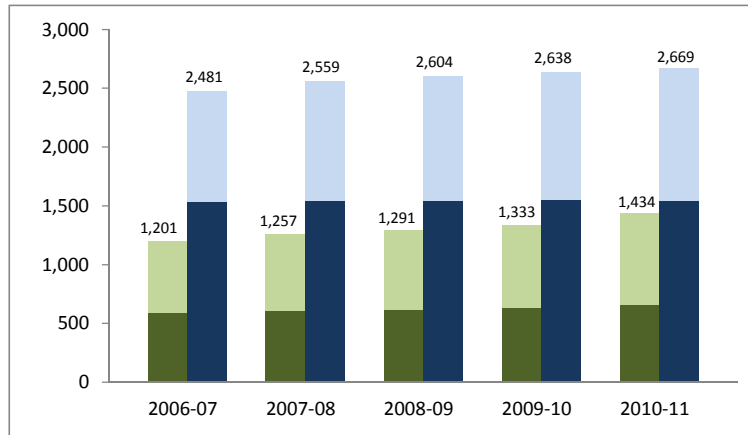
## Enrollment and Faculty Overview

Source: IPEDS 12-Month Enrollment and Human Resources

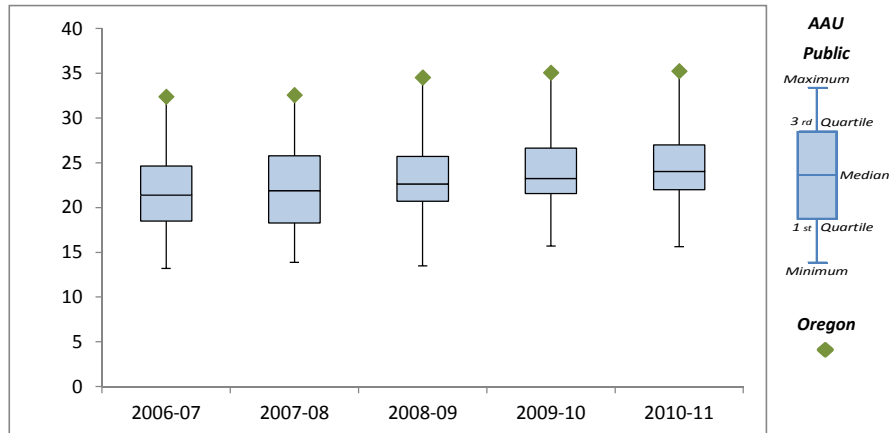
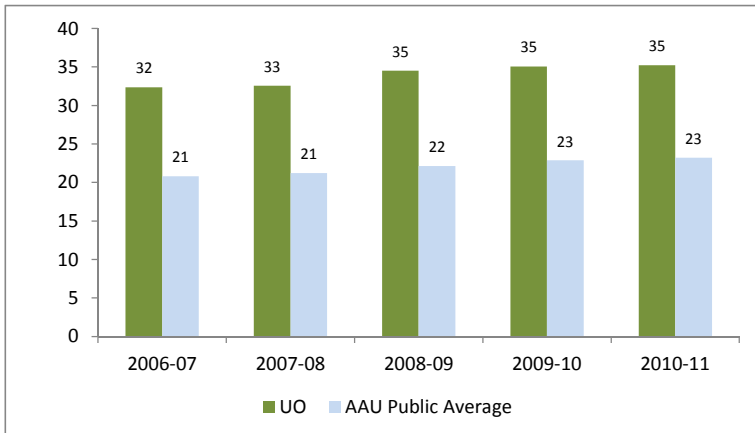
### 12-Month Student FTE



### Faculty FTE



### Ratio Student FTE:Tenure-Related Faculty FTE

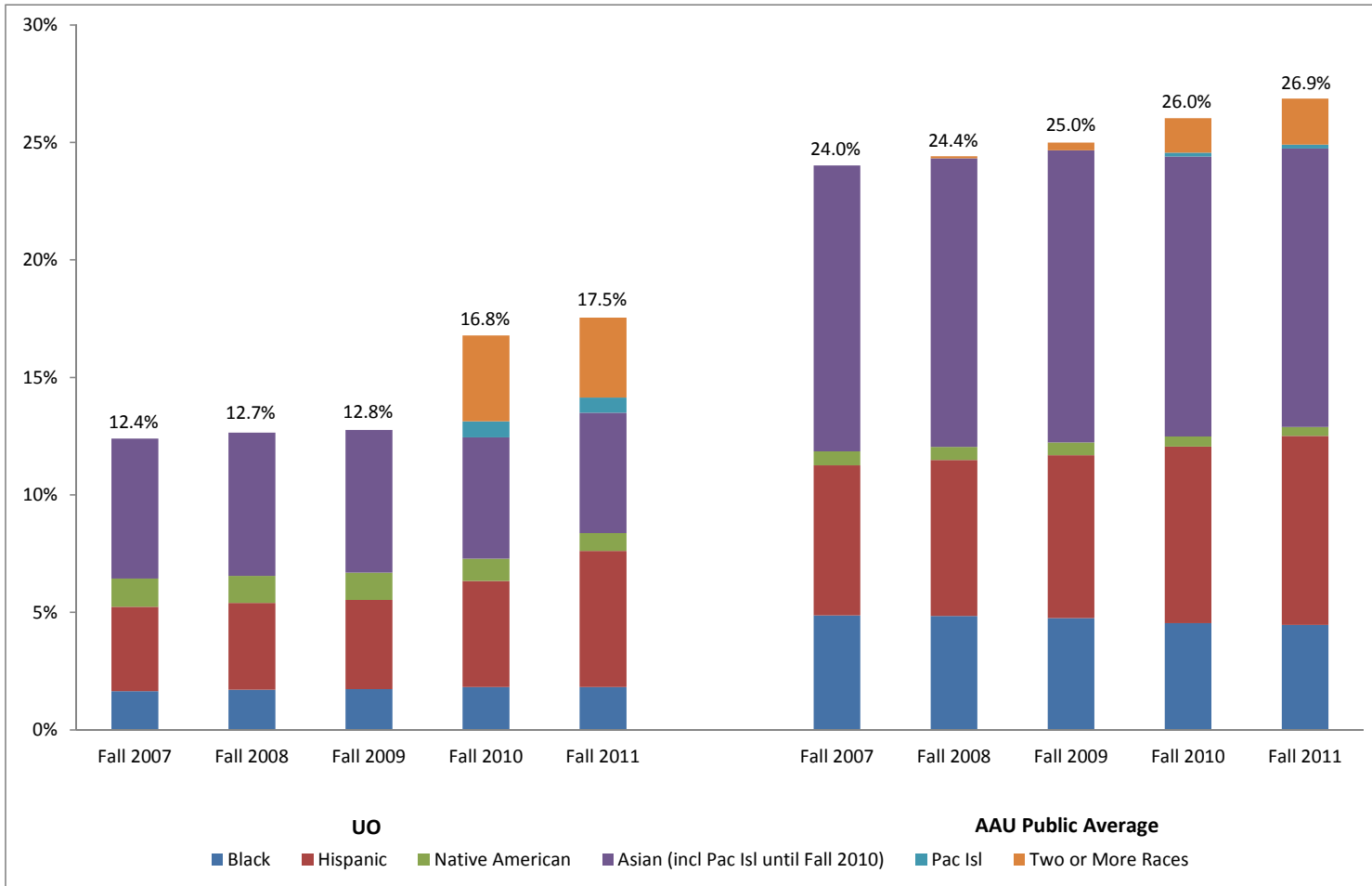


**Notes:** 'Faculty FTE' includes employees with faculty status working in the areas of instruction, research, and public service. 'Executive/administrative/managerial' and 'Other professionals (support/service)' are not included. The student-faculty ratio reported above may differ from the ratio reported elsewhere; it is common to compare student FTE to the FTE of all instructional faculty.

## Student Race and Ethnicity

Source: IPEDS Fall Enrollment

### Percent Students of Color



**Notes:** Due to a change in federal requirements in how race/ethnicity data are collected, data may not be comparable over time. Specifically:

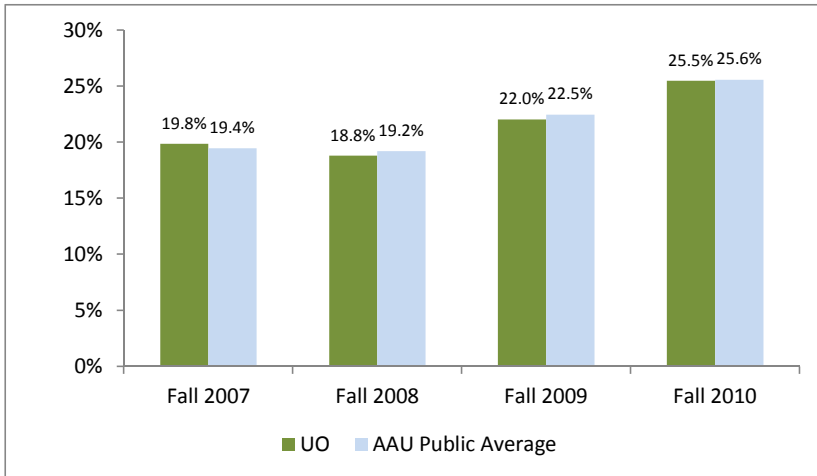
- the new methodology may increase the number of students identified as Hispanic
- the reporting group Asian/Pacific Islander was disaggregated into Asian and Native Hawaiian/Pacific Islander, and
- the category "Two or More Races" was introduced to identify individuals selecting multiple races.

The change was implemented in Fall 2010 at the University of Oregon, but was implemented as early as Fall 2008 at some institutions.

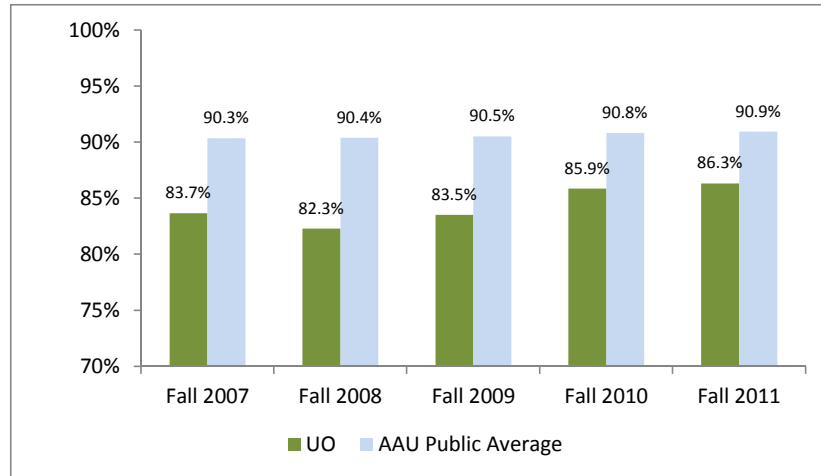
## Student Access and Progress

Source: IPEDS Financial Aid, Institutional Characteristics, and Fall Enrollment

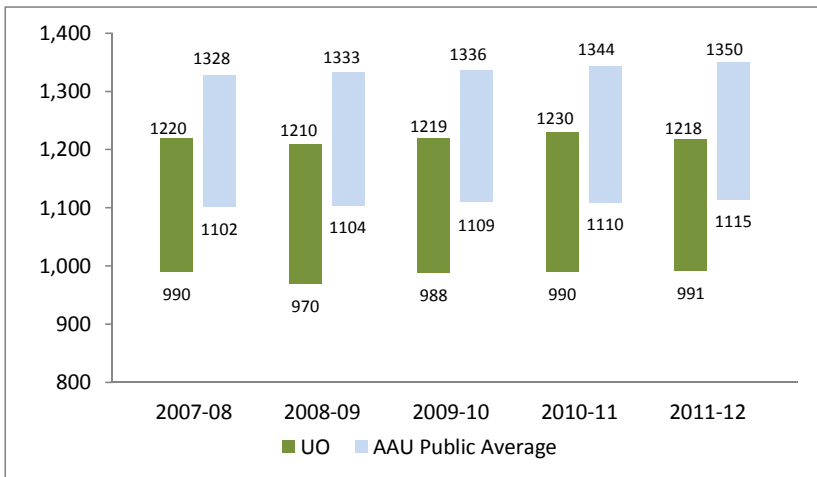
### Percent Pell Eligible (All Undergraduates)



### Retention to Second Year



### SAT Combined Score, 25<sup>th</sup> -75<sup>th</sup> Percentile

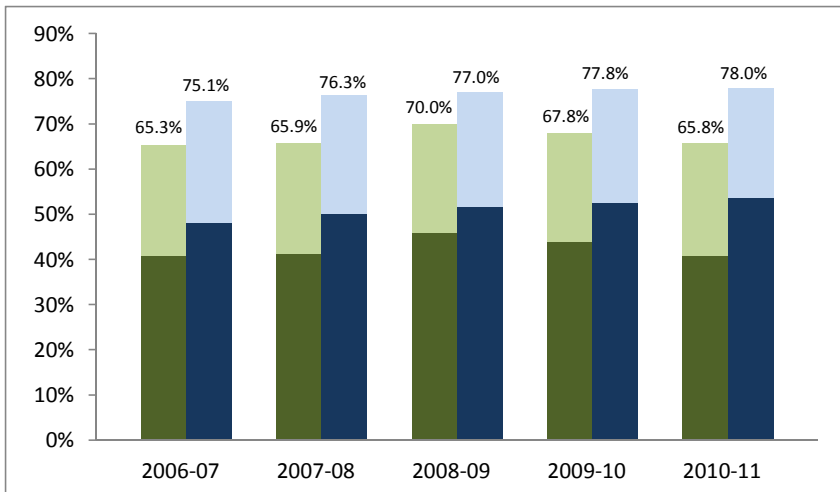




## Student Graduation Rates and Debt at Graduation

Source: IPEDS Graduation Rates and College InSight (Common Data Set)

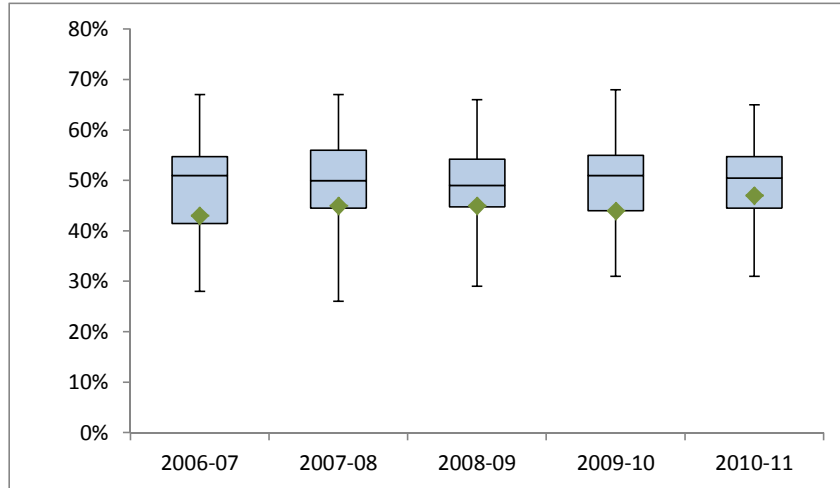
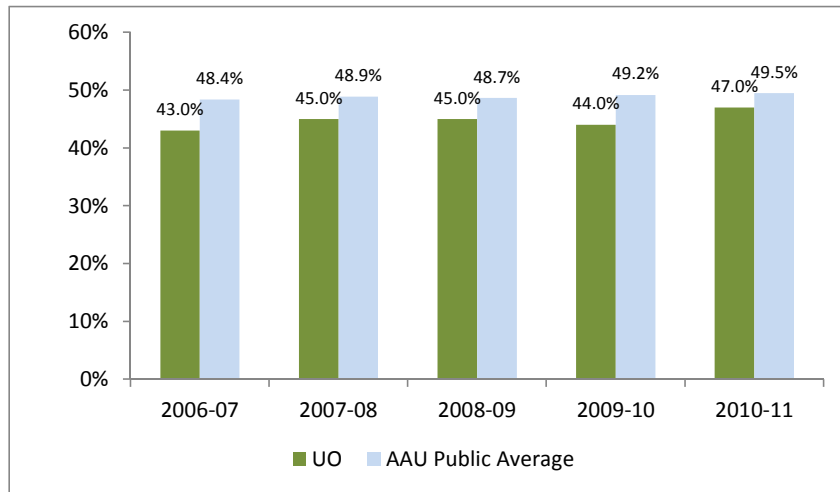
### Graduation Rates



Oregon - 6Y Rate  
Oregon - 4Y Rate

AAU Public Avg - 6Y Rate  
AAU Public Avg - 4Y Rate

### Percent of Students Graduating without Debt



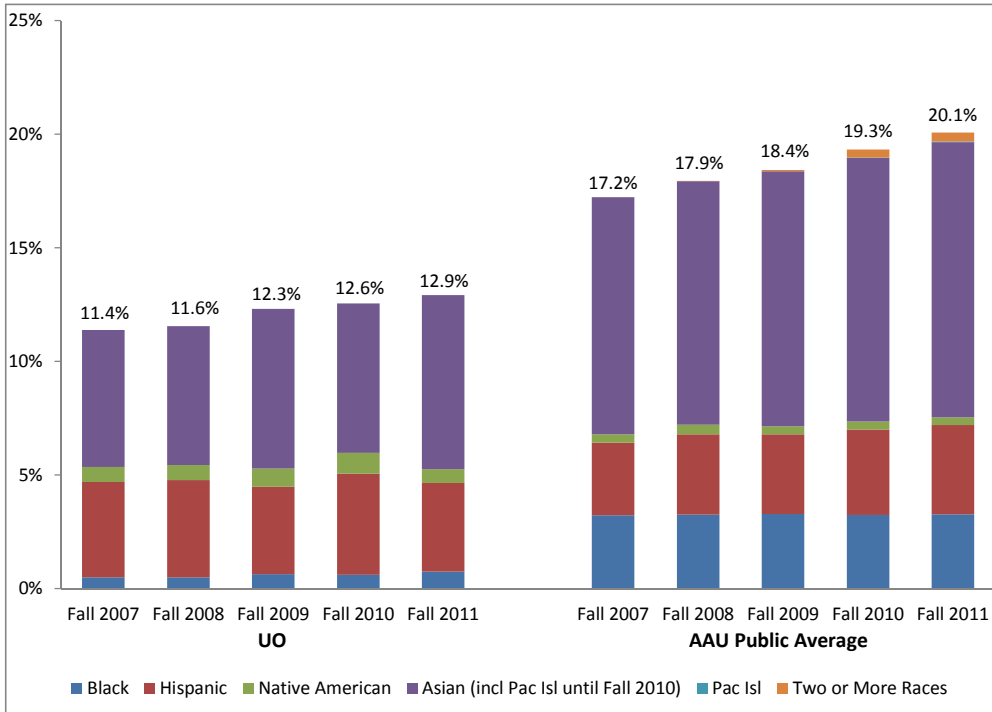
AAU  
Public  
Maximum  
3rd Quartile  
Median  
1st Quartile  
Minimum  
  
Oregon  
◆

**Notes:** 'AAU Public Average' for students graduating without debt represents an average of the calculated percent for each institution.

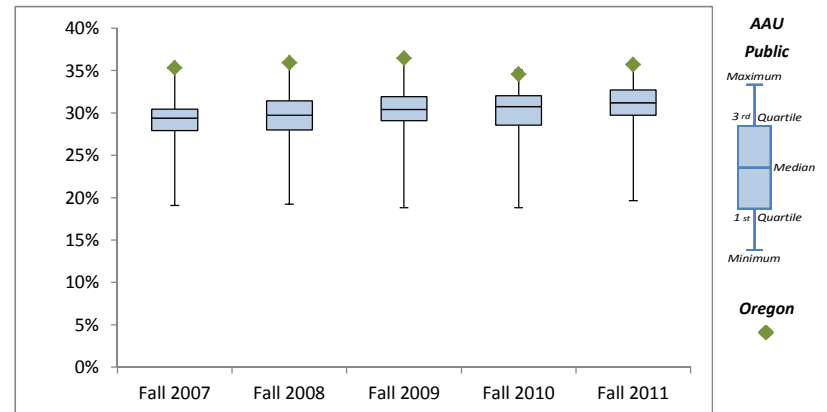
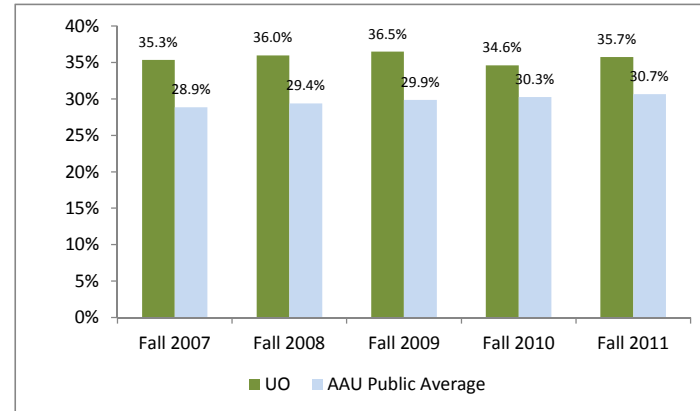
## Faculty Diversity

Source: IPEDS Human Resources

### Percent Tenure-related Faculty of Color



### Percent Female Tenure-related Faculty



**Notes:** Due to a change in federal requirements in how race/ethnicity data are collected, data may not be comparable over time. Specifically:

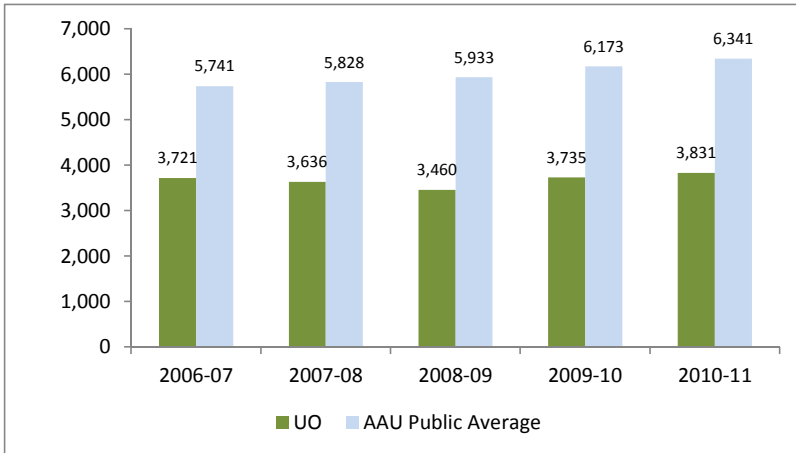
- the new methodology may increase the number of faculty identified as Hispanic
- the reporting group Asian/Pacific Islander was disaggregated into Asian and Native Hawaiian/Pacific Islander, and
- the category "Two or More Races" was introduced to identify individuals selecting multiple races.

The University of Oregon has not resurveyed its employees using the updated federal methodology; only new hires are subject to the new format. The change was implemented at the UO later than at many other institutions.

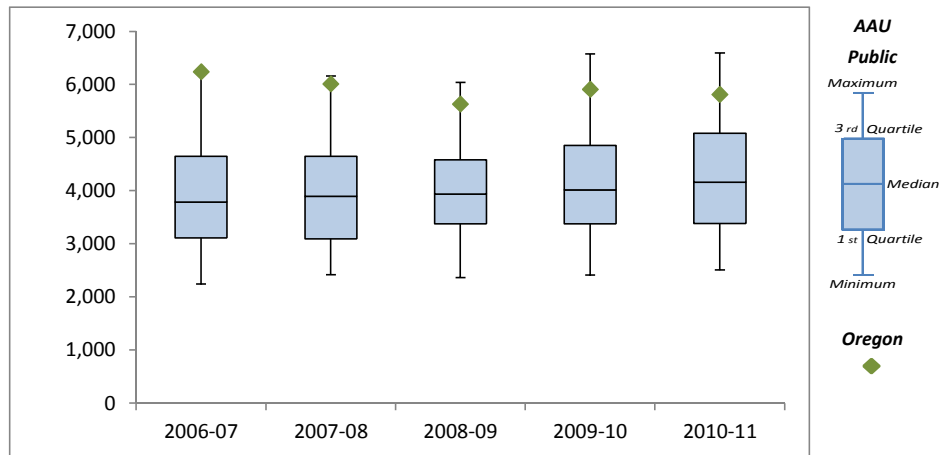
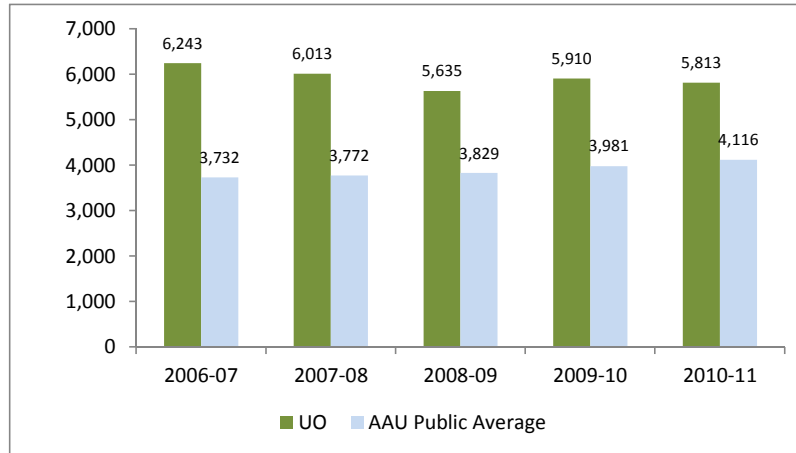
## Bachelor's Degrees Awarded

Source: IPEDS Completions and Human Resources

### Bachelor's Degrees Awarded



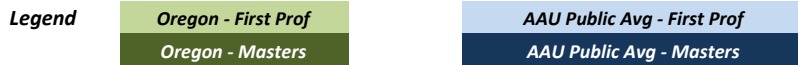
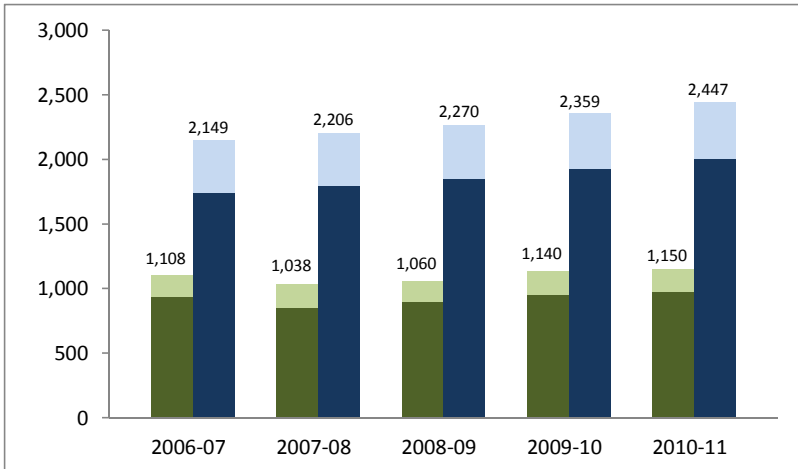
### Bachelor's Degrees Awarded per Tenure-Related Faculty FTE x 1000



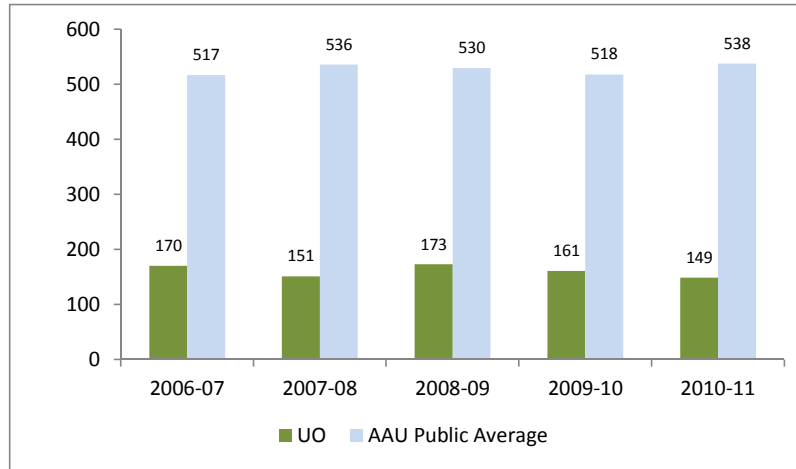
## Graduate Degrees Awarded

Source: IPEDS Completions and Human Resources

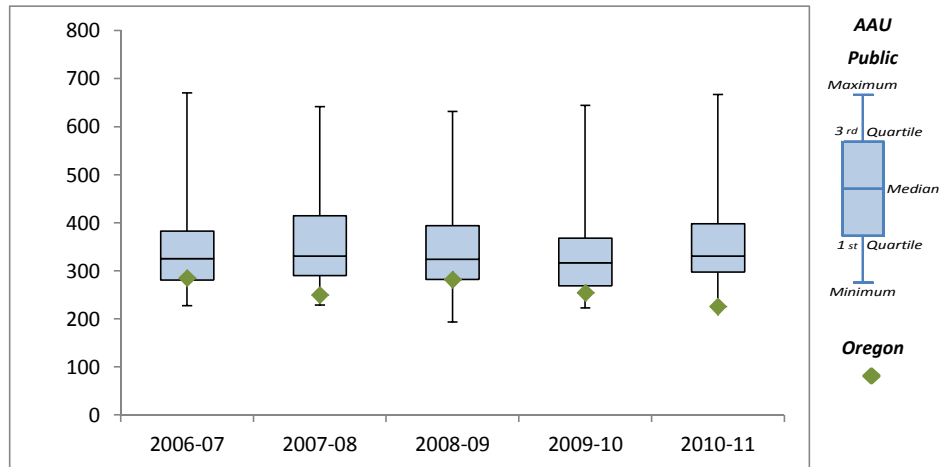
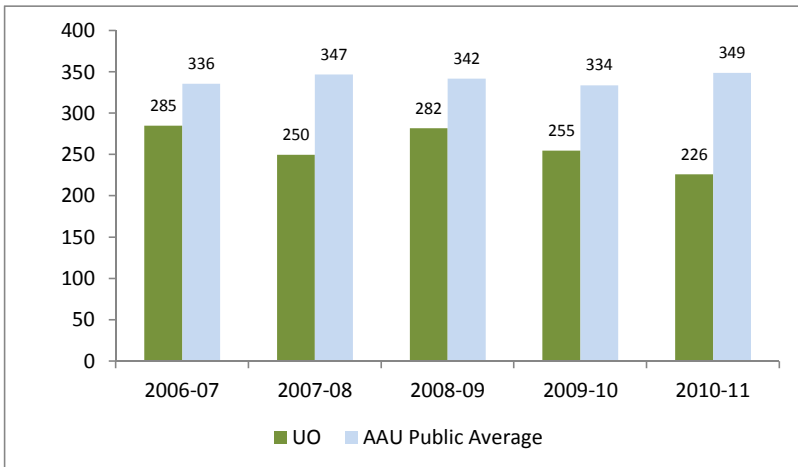
### Graduate Degrees Awarded - Masters and First Professional



### Graduate Degrees Awarded - Doctoral



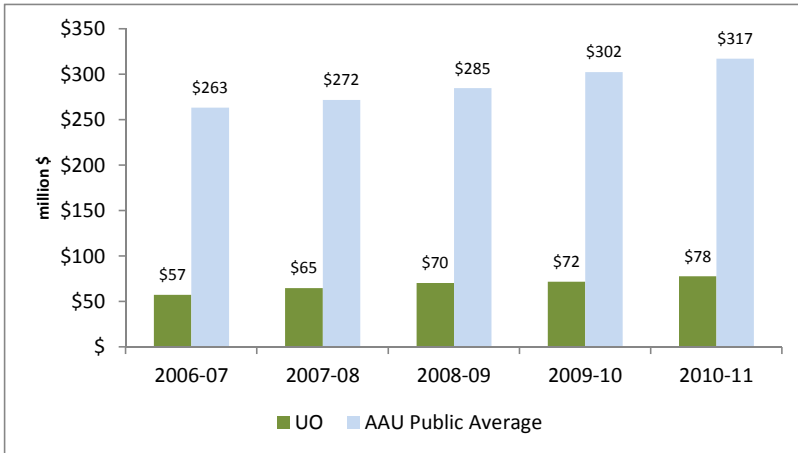
### Doctoral Degrees Awarded per Tenure-Related Faculty FTE x1000



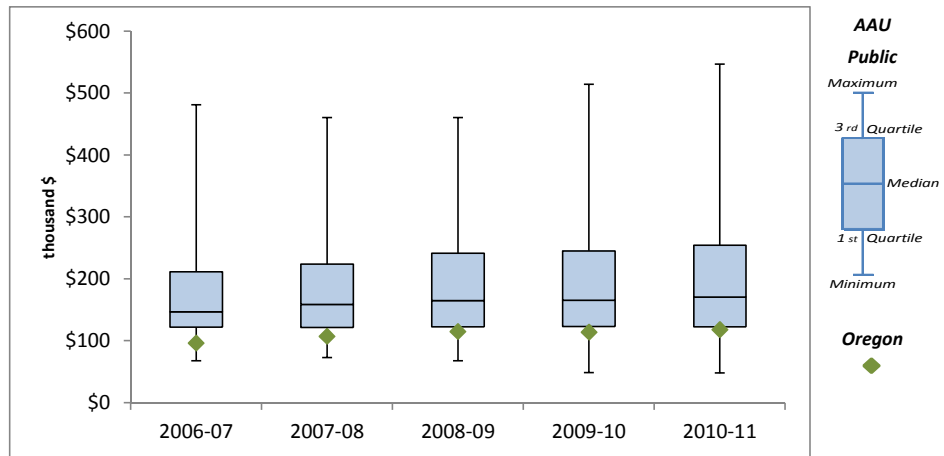
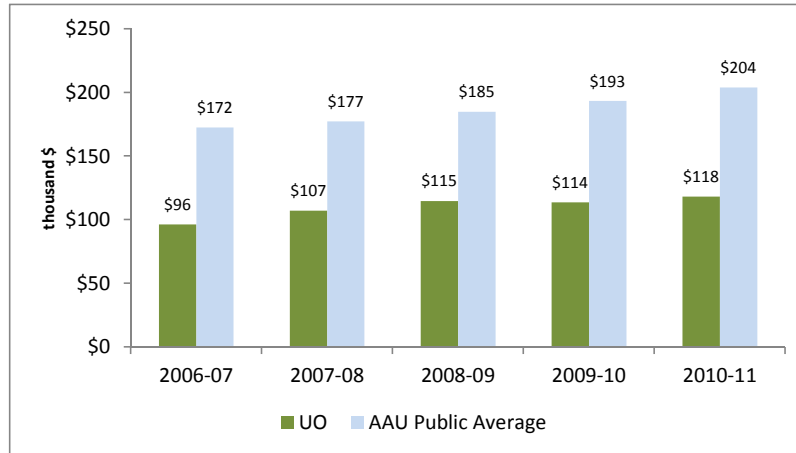
## Federally Financed Research and Development

Source: NSF Higher Education Research and Development

### Federally financed R&D, excluding USDA and ARRA



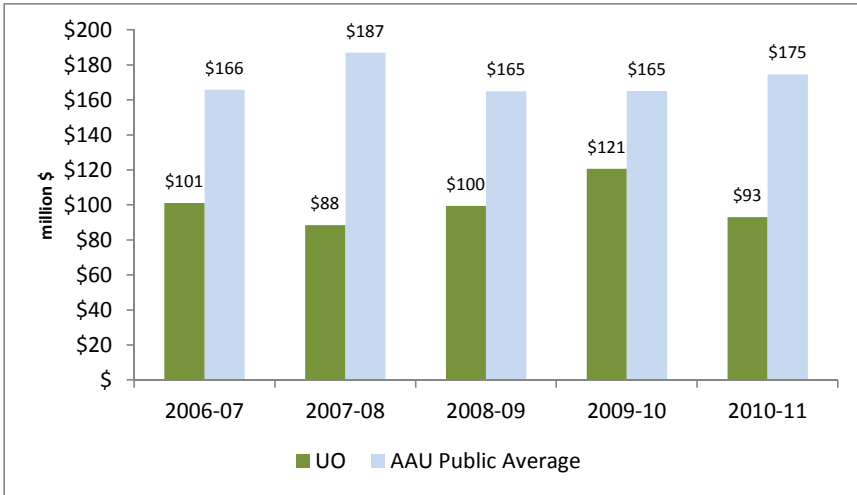
### Federally financed R&D per Tenure-Related Faculty, excluding USDA and ARRA



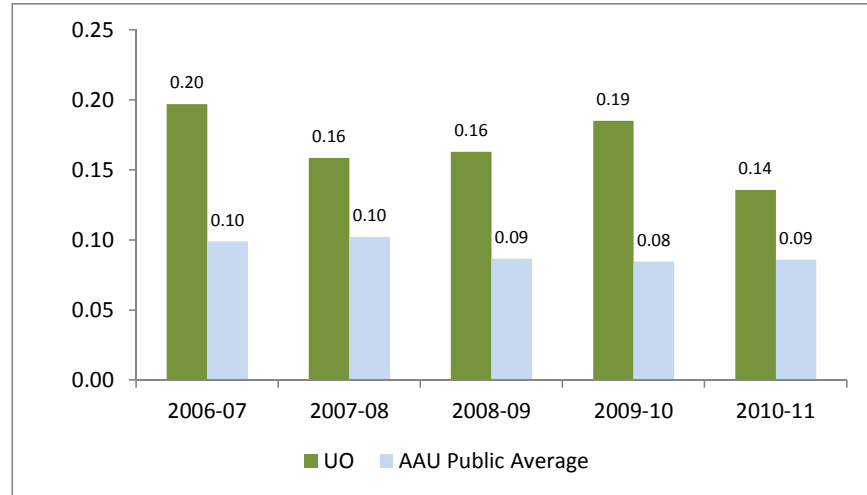
## Fundraising

Source: IPEDS Finance and Council for Aid to Education's Voluntary Support of Education (VSE)

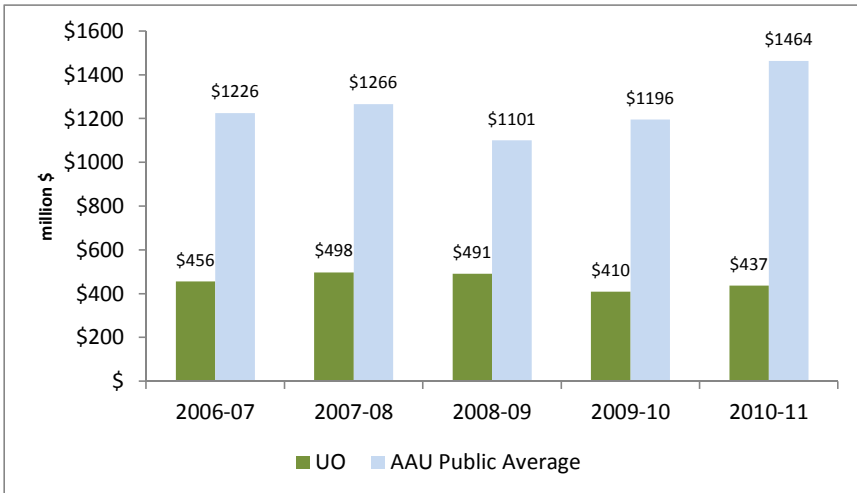
### Annual Giving



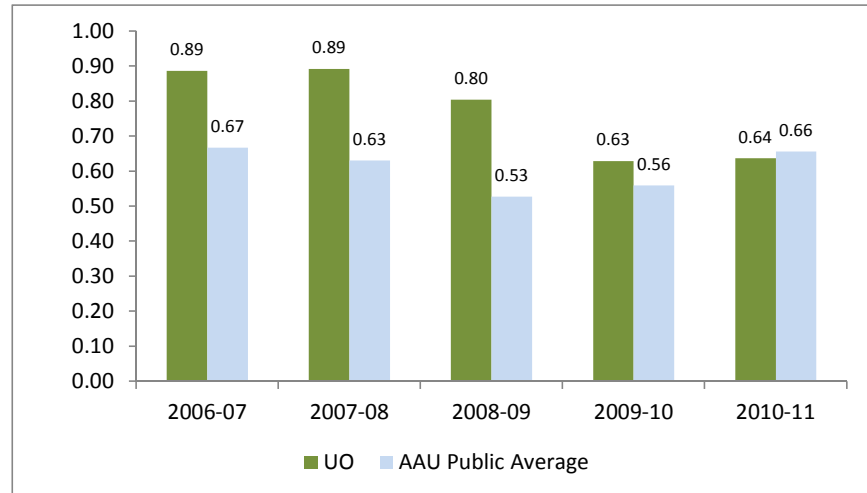
### Annual Giving, normed by Total Expenditures



### Value of Endowment, End of Fiscal Year



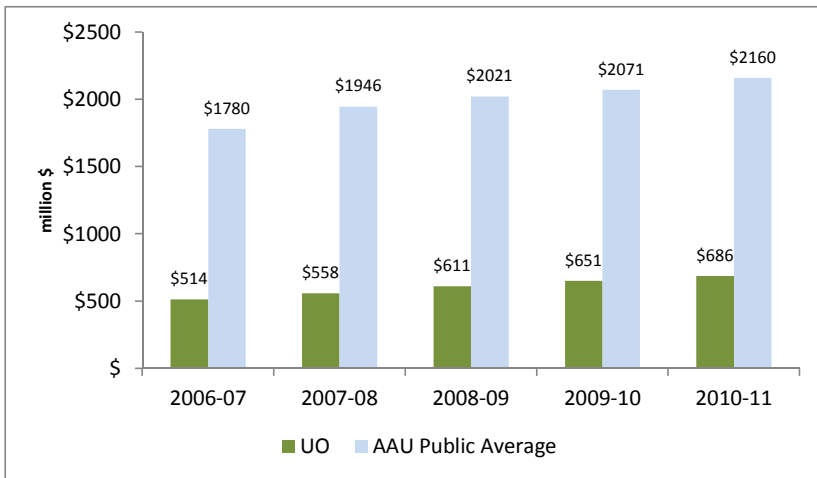
### Value of Endowment, End of Fiscal Year, normed by Total Expenditures



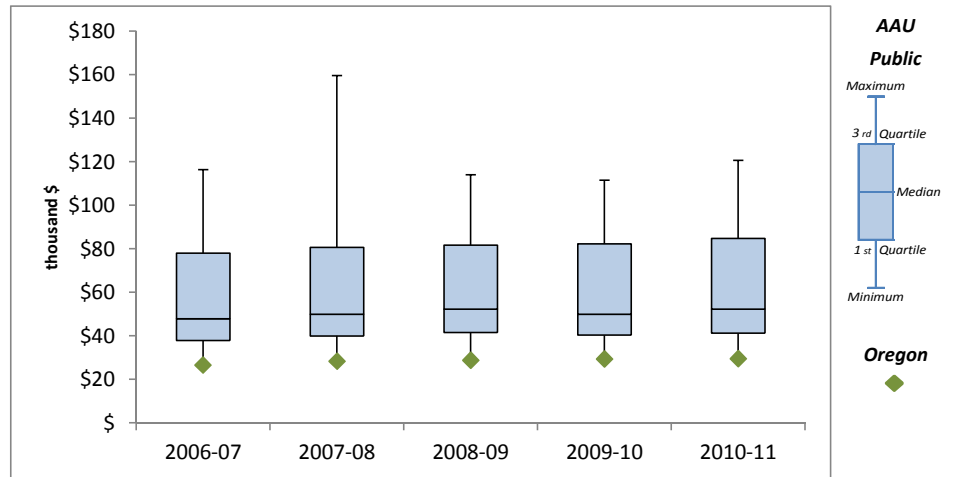
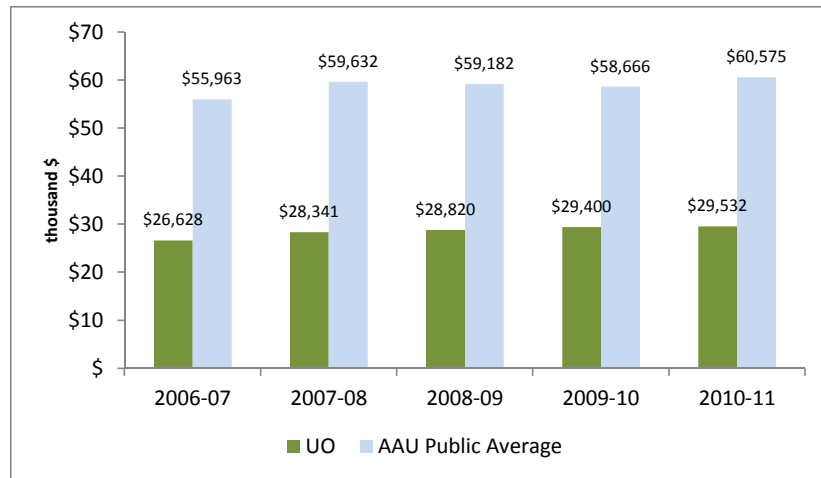
## Total Expenditures

Source: IPEDS Finance

### Total Expenditures



### Total Expenditures per Student FTE



**Notes:** Due to changes in the IPEDS Finance survey instrument, it is not possible to identify expenditures for Hospital Services and Independent Operations in a manner that is consistent across institutions until FY2010; thus the choice of Total Expenditures as a metric. In FY2011 the AAU average for Total Expenditures less Hospital Services and Independent Operations was \$1.8 billion or \$49,265 per student FTE.

# Appendix

---



## Appendix A. Sources

### **12-month Student FTE**

<u>Source</u>	IPEDS 12 Month Enrollment
<u>Description</u>	Typically based on student credit hour activity, although institutions may elect to provide their own calculation of student FTE.
<u>Timing</u>	July 1 to June 30

### **Faculty FTE**

<u>Source</u>	IPEDS Human Resources, Employees by Assigned Position
<u>Description</u>	All employees with faculty status and primary function of instruction, research or public service. Tenure-related faculty is the sum of tenured and tenure-track faculty. Converted to FTE by summing full-time with part-time divided by 3.
<u>Timing</u>	Fall

### **Ratio Student FTE:Tenure-Related Faculty FTE**

<u>Source</u>	See above
<u>Description</u>	Full-year student FTE aligned with matching Fall faculty FTE

### **Student Race/Ethnicity**

<u>Source</u>	IPEDS Fall Enrollment
<u>Description</u>	Grand total of students enrolled fall term, by race/ethnicity. Due to changes in federal requirements in how race/ethnicity data are collected, data may not be comparable over time.
<u>Timing</u>	Fall

### **Pell Eligibility**

<u>Source</u>	IPEDS Financial Aid
<u>Description</u>	Number of undergraduate students receiving the Pell Grant divided by the total number of undergraduate students in the financial aid cohort.
<u>Timing</u>	Fall

### **SAT Scores**

<u>Source</u>	IPEDS Institutional Characteristics
<u>Description</u>	SAT Critical Reading and Math scores for newly enrolling students, 25th and 75th percentile.
<u>Timing</u>	Institutions may report either current fall or previous fall.

### **Retention to Second Year**

<u>Source</u>	IPEDS Fall Enrollment
<u>Description</u>	Full-time, first-time degree-seeking students who are enrolled as of the fall-term census date one year after their initial enrollment
<u>Timing</u>	Fall

### **Graduation Rates**

<u>Source</u>	IPEDS Graduation Rates
<u>Description</u>	Of an original first-time full-time fall cohort, the number of students graduating within four, five and six years. Institutions may choose to adjust the cohort for allowable exclusions.
<u>Timing</u>	Fall cohort graduating by August 31 at four-year, five-year and six-year mark

## Appendix A. Sources

### ***Students Graduating with (without) Debt***

<u>Source</u>	The Institute for College Access & Success, College InSight, <a href="http://college-insight.org">http://college-insight.org</a> sourced from Common Data Set
<u>Description</u>	The percentage of graduates of four-year colleges who had student loan debt at graduation. Metric has been reversed to represent students graduating without debt
<u>Timing</u>	Student who started at the institution as first- time students and received a bachelor's degree in the specified year.

### ***Faculty Demographics***

<u>Source</u>	IPEDS Fall Staff
<u>Description</u>	Fall-term faculty by race/ethnicity and gender. Faculty of Color includes Asian, Black, Hispanic, Native American, Pacific Islander and Multi-Ethnic. Due to changes in federal requirements in how race/ethnicity data are collected, data may not be comparable over time.
<u>Timing</u>	Fall

### ***Bachelor's Degrees***

<u>Source</u>	IPEDS Completions
<u>Description</u>	Bachelor's degrees conferred
<u>Timing</u>	July 1 to June 30
<u>Norming</u>	Full-year degrees aligned with matching Fall faculty FTE

### ***Graduate Degrees***

<u>Source</u>	IPEDS Completions
<u>Description</u>	Doctoral degrees include Doctor's degree (old classification), Doctor's degree - research/scholarship (new classification), and Doctor's degree - other (new classification). First professional degrees include First-professional degree (old classification), Doctor's degree - professional practice (new classification)
<u>Timing</u>	July 1 to June 30
<u>Norming</u>	Full-year degrees aligned with matching Fall faculty FTE

### ***Research and Development***

<u>Source</u>	NSF Survey of Research and Development Expenditures at Universities and Colleges/Higher Education Research and Development Survey
<u>Description</u>	Federally Financed R&D Expenditures in All Fields, excluding USDA source and subtracting ARRA funding for FY2010 and FY2011
<u>Timing</u>	Fiscal year
<u>Norming</u>	Fiscal year aligned with matching Fall faculty FTE

### ***Annual Giving***

<u>Source</u>	Council for Aid to Education, Voluntary Support of Education Survey
<u>Description</u>	Total dollars raised by institution
<u>Timing</u>	Fiscal year

## Appendix A. Sources

### ***Endowment***

Source

IPEDS Finance

Description

Value of endowment assets at the end of the fiscal year. Consists of gross investments of endowment funds, term endowment funds, and funds functioning as endowment for the institution and any of its foundations and other affiliated organizations.

Timing

Fiscal year

### ***Expenditures***

Source

IPEDS Finance

Description

Total expenses and deductions - total expense is the sum of operating and non-operating expenses and deductions.

Timing

Fiscal year

Norming

Normed to student FTE in same year